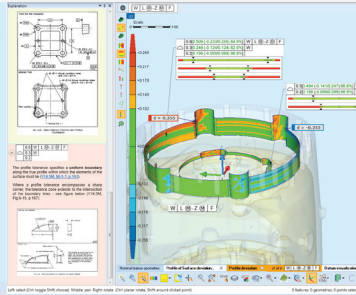
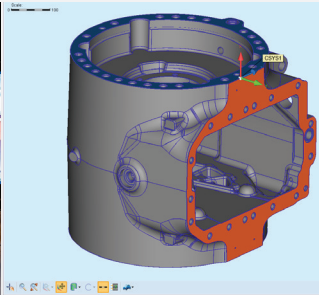
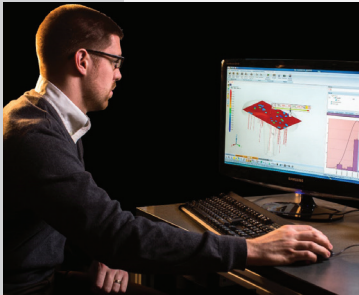


KOTEM

EVOLVE | Model-Based Family Of Software



The EVOLVE Software Suite

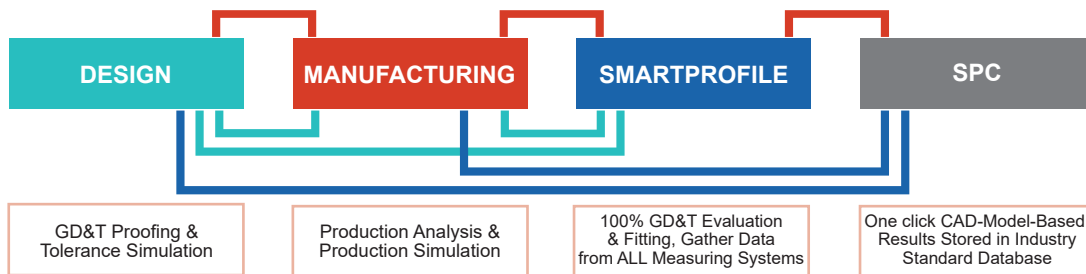
EVOLVE Suite

EVOLVE is a model-based family of software that seamlessly connects Design, Production and Inspection Teams across a manufacturing enterprise. It integrates easily with 3D CAD and CAM, incorporating PMI data automatically. EVOLVE optimizes the design process and integrates with production, enabling manufacturers to shorten product design/development time, normalize inspection and measurement techniques, improve process control, and manage product tolerances throughout the manufacturing process.

Evolve Software Suite Benefits

- Supports the needs of enterprises from design, production and quality assurance.
- Reduces cost of manufacturing.
- Imports PMI data that integrates easily with 3D CAD and CAM.
- Shortens the manufacturing development time.
- Expands manufacturing capability and reduces liability risk.

EVOLVE Software Modules



EVOLVE DESIGN

KOTEM has built a family of products to help design engineering tolerances comply with GD&T (GPS) standards. **EVOLVE Design** bridges the gaps in potential process errors from design to manufacturing to inspection, helping save time and money. EVOLVE Design imports the CAD model, defines standards, evaluates and then saves the CAD model for future reference and evaluation.

EVOLVE MANUFACTURING

EVOLVE Manufacturing graphically compares measured results based on design and manufacturing datums, producing fast results for proper machine adjustments to GD&T. EVOLVE Manufacturing identifies systematic problems and recommends solutions to minimize tolerance conditions. EVOLVE Manufacturing allows grouping and alignments of part features to help identify error components and specifies the corrective action to fix those errors.

EVOLVE DATA PREPARATION

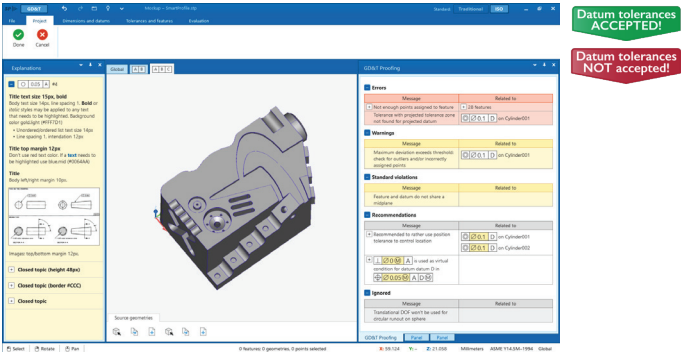
EVOLVE Data Preparation acts as the connection between advanced measurement systems that generate a volume of measured points and prepares these points to be analyzed and processed for GD&T evaluation. EVOLVE Data Preparation takes dense and noisy data captured by any sensor type and converts these points into "CMM-like" point data. EVOLVE Data Preparation reinforces the best technological measurement options while maximizing speed and accuracy in identifying critical data points for evaluation.

EVOLVE SPC

EVOLVE SPC is a full statistical process control program that can be used as either a standalone product with existing measuring systems or integrated into the EVOLVE suite. Visual graphs, data and tables allows users to interact with the 3D CAD models and their corresponding collected point clouds. EVOLVE SPC also allows real time updates that display chart data such as point deviation and a full database to support trends and long term analysis.

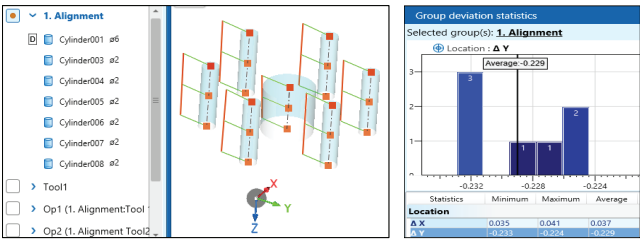
EVOLVE Software Suite Features

EVOLVE DESIGN



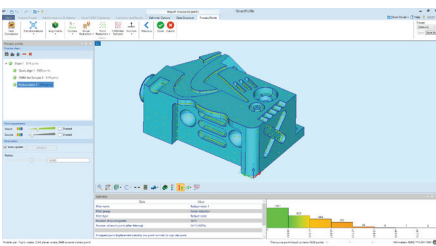
EVOLVE Design imports CAD models to create tolerance simulations, proving that specific datum points will be accepted or rejected.

EVOLVE MANUFACTURING



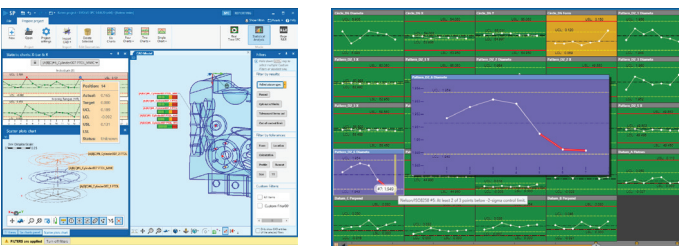
EVOLVE Manufacturing creates groups of part features to discover common issues and then graphically compare the resulting tolerances.

EVOLVE DATA PREPARATION



EVOLVE Data Preparation takes noisy point clouds imported from any sensor type and reduces them to critical points necessary for GD&T evaluation.

EVOLVE SPC



EVOLVE SPC generates interactive charts from CAD models and creates PDF and Excel reports based upon data characteristics.



KOTEM

The leader in dimensional analysis software

KOTEM is the worldwide leader in dimensional analysis software. Our family of advanced GD&T and fitting software helps manufacturers integrate quality inspection data with their manufacturing and design work flows. KOTEM is a Quality Vision International company.

QVI® (Quality Vision International) is the world's largest vision metrology company. Founded in 1945, QVI is the world leader in optical, electronic and software technologies for vision and multisensor measuring systems.

To learn more about the EVOLVE family go to www.kotem.com/evolve

EVOLVE is fully compliant with all internationally accepted GD&T Standards:



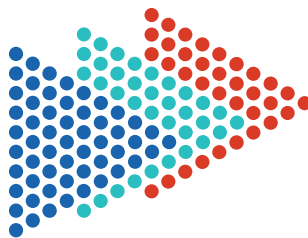
ASME Y14.5M-1994



ASME Y14.5-2009



ISO 1101



KOTEM

